

# ARRIVAL & DEPARTURE GUIDE

Detailed arrival/departure and ground experience information to help you prepare for your next mission with us.

## **MDLR/LRM**

La Romana Casa de Campo International Airport

**PREPARED BY**  
UNIVERSAL AVIATION

**24/7 SUPPORT**  
+1 (809) 813-9070



# ARRIVAL PROCEDURES



## PASSENGERS AND CREW ARRIVALS

### IMMIGRATION AND CUSTOMS PROCESS

Upon arrival, passengers and crew will be greeted by a Universal Aviation staff member as they disembark. Passengers and crew will need to walk to the VIP Terminal with the assistance of our staff. This will be a short walk, approximately 150 meters. Golf carts could be made available upon request if someone chooses not to walk from the aircraft to the Terminal entrance airside. Our staff will transport all luggage and bags to the Terminal for processing.

Our CIQ area is conveniently located in front of our VIP Terminal. Inside the Terminal, a staff member will collect everyone's passports and present them to the customs and immigration officers. We will process all luggage through security and customs while passengers and crew watch. After all passengers and crew clear customs and immigration, a staff member will escort them to meet their ground transportation vehicle at the landside entrance of the Terminal.

It can take up to 20 minutes to disembark the aircraft, pass through customs, and leave the airport in their ground transportation vehicle. We will stay in contact with the ground transport driver to ensure passengers have a smooth pick-up.

## PASSENGERS WITH DISABILITIES

### WHEELCHAIR AVAILABLE

A staff member will assist passengers with disabilities in deplaning the aircraft. Request a wheelchair prior to arrival to avoid any delays.

## PARKING

Aircraft may park close to the Terminal, where passengers and crew will need to disembark.

## PET ARRIVALS

### PERMITTED WITH VALID DOCUMENTATION

Pets allowed in the Dominican Republic include cats, dogs, household birds, hamsters, guinea pigs, ferrets, non-poisonous reptiles, pot belly pigs, rabbits, and tropical fish. All pets must have the appropriate documentation from a licensed Veterinarian. Pet's original health certificate must include the license number and signature of the veterinarian. **The certificate and pet's treatment must not be older than 15 consecutive days after being issued, or it will not be valid.** Each animal will be charged a \$10.00 USD fee per entry.

# DEPARTURE PROCEDURES

## PASSENGER AND CREW DEPARTURES

### MUST MEET AT ENTRANCE OF VIP TERMINAL

On average, the entire departure process for passengers and crew can take up to 20 minutes if all documents are in order. A Universal Aviation staff member will be waiting for passengers and crew members at the entrance of the Terminal.

They will process all luggage through security and customs while passengers and crew watch. Everyone will be escorted through security and immigration with the assistance of a staff member. Once everyone is cleared from security and immigration, they will be escorted to the aircraft.

## LUGGAGE HANDLING

All bags and luggage pieces are received at the entrance of the VIP Terminal. A Universal Aviation staff member will take everyone's luggage to the CIQ area. Once passengers and crew members are cleared, a staff member will transport all luggage to the aircraft for loading.

## PET DEPARTURES

### PERMITTED WITH VALID DOCUMENTATION

Pet's original health certificate must include the license number and signature of the veterinarian. **The certificate must not be older than 15 consecutive days after being issued, or it will not be valid.**

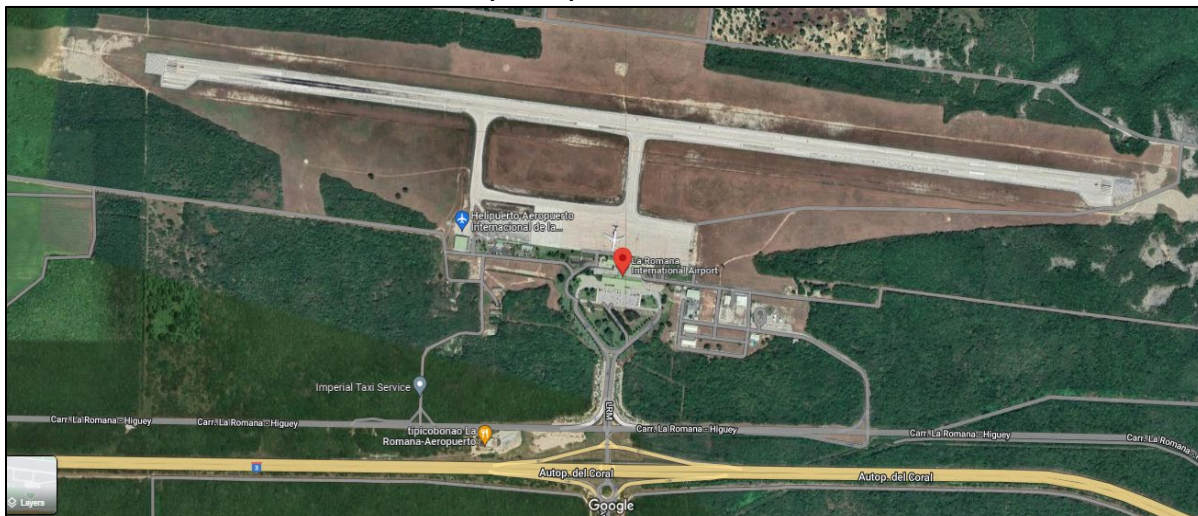
- Rabies vaccination must not be older than one year.
- Each animal will be charged a \$10.00 USD fee per exit.

## PASSENGER GROUND TRANSPORTATION

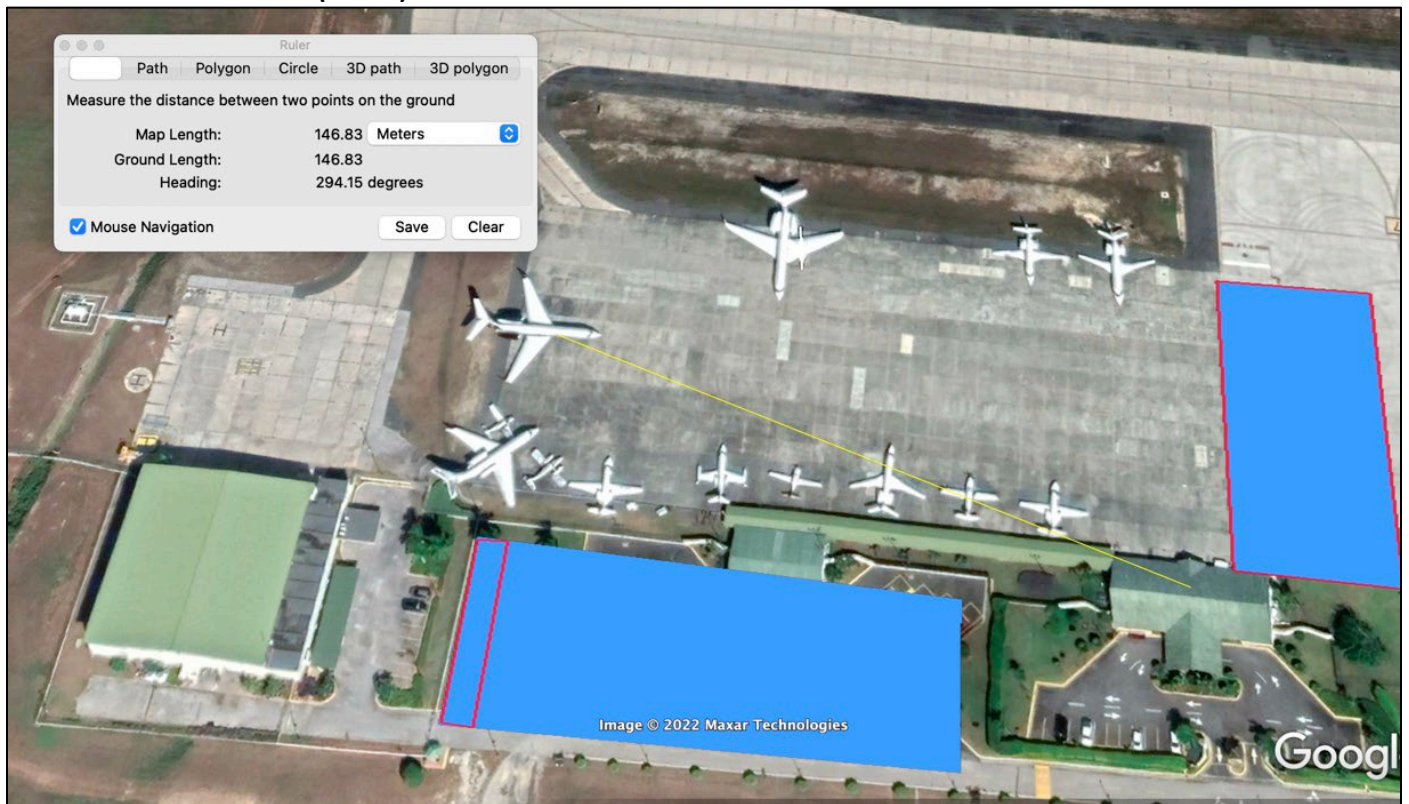
### ADDRESS FOR DRIVERS:

Carr La Romana – Higuey 5.5, La Romana 22000, Dominican Republic

### LA ROMANA INTERNATIONAL AIRPORT (MDLR) MAP



## UNIVERSAL AVIATION AT (MDLR) MAPS



## USEFUL LINKS & RESOURCES

- [DOMINICAN REPUBLIC, LA ROMANA \(MDLR\) INFORMATION](#)
- [BUSINESS AVIATION DESTINATION GUIDE 2022 FOR THE DOMINICAN REPUBLIC](#)
- [RESOURCES IN LATIN AMERICA](#)
- [GLOBAL GROUND HANDLING NETWORK](#)
- [FEASIBILITY - IQ - MISSION PLANNING INTELLIGENCE](#)
- [TRIP SUPPORT](#)